



# TRACTOR SERIES



Wechat Public Number

Jiangsu World Agricultural Machinery Co.,Ltd.  
Web: [www.worldnyjx.com](http://www.worldnyjx.com) Tel:+86-511-86349102  
Postal Code: 212311 Fax:+86-511-86349102  
Email: [fmworld@worldgroup.com.cn](mailto:fmworld@worldgroup.com.cn)  
Facebook Official Account: FM World Agricultural Machinery  
Add: Picheng Industrial Park,Danbei Town,Danyang City,Jiangsu

COMMITTED TO  
**FULL MECHANIZATION**  
OF MODERN AGRICULTURE



# K SERIES TRACTOR



## IMAGES&DETAILS



- 1

Axles with good sealing performance and Ground clearance 440mm ensure machine running well in water and deep paddy field.
- 2

Powerful hydraulic system with 3 point hitch and two strong oil cylinders to match different kinds of implements.
- 3

Maximum turning angle 55 degrees, providing small turning radius and great performance in narrow field.
- 4

Human-friendly designs like adjustable steering wheel and seat, flat floor, operator-friendly layout and large space provide comfortable operating experience.

### FEATURES

- 1 High quality engine with strong power but low fuel consumption.
- 2 Adopt transmission 8F+8R shuttle for easier operation,which caters to different needs.
- 3 Axles with outstanding sealing performamnce ensure tractors working well in water or deep muddy field.
- 4 By adopting dual clutch, walking and PTO power are seperated which brings a more flexible working style.
- 5 High quality bearings are used for long prolonging working life.
- 6 ROPS&Canopy are equipped as standard, while cabin and air brake are optional for comfrot and road transport.

### SPECIFICATIONS

	Modle	WD454K	WD504K
	Structure	4*4	
Engine	Engine Power@speed(HP)	45@2400	50@2400
	Engine Type	4 Cylinders Inline, Vertical, Water-cooled, diesel engine	
	Fuel Tank Capacity(L)	70	
	Battery	12V	
	Air Cleaner	Dry	
Transmission	Gears	Shuttle 8F+8R	
	Clutch	Dual Clutch	
	Brake	Mechanical disc	
	Differential Lock	Pin Type,Mechanical	
PTO System	Direction of turning	Clockwise, viewed from tractor rear	
	Diameter of PTO Sharft(mm)	35	
	PTO Speeds(rpm)	540/760	
Hydraulic System	Type	Category I & 3 point hitch	
	Control System	Position, draft	
	Lifting Capacity(Kg)	≥1191	≥1324
Other Parameters	Dimension(mm) Canopy	3650*1572*2650	
	Ground Clearance(mm)	440	
	Tires(F/R)	8-18/13.6-24 R-1T, other size optional	
	Wheel Base(mm)	1845	
	Ballast Weight Front/Rear(Kg)	108/90	
	Min Operation Weight(Kg)	1950(canopy)	

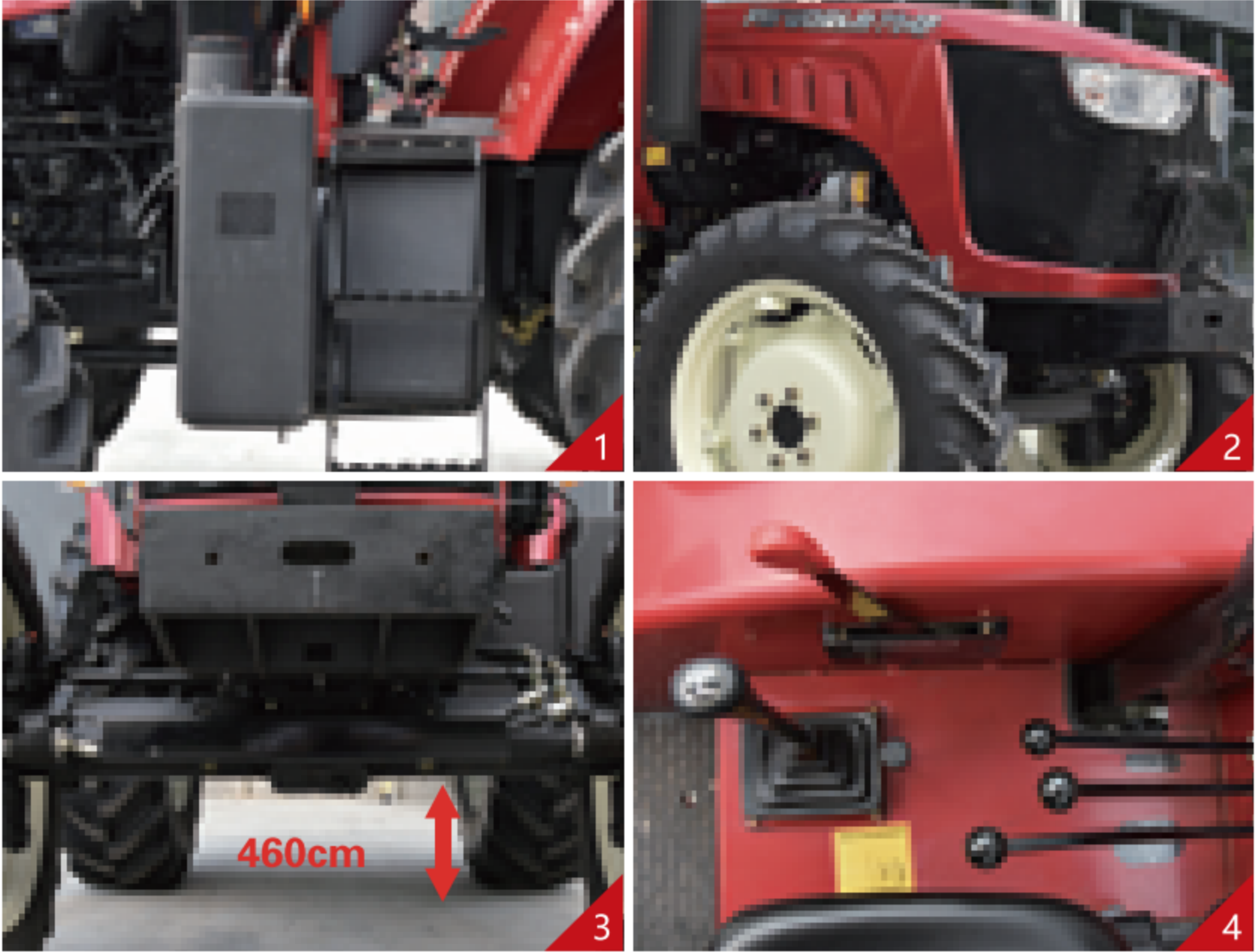


# F SERIES TRACTOR

## FEATURES

- ① High quality engine with strong power but low fuel consumption.
- ② Adopt transmission 12F+12R shuttle for easier operation which caters to different needs.
- ③ Axles with outstanding sealing performance ensure tractors working well in water or deep muddy field.
- ④ High quality bearings are used for long prolonging working life.
- ⑤ ROPS&Canopy are equipped as standard, while cabin and air brake are optional for comfort and road transport.

## IMAGES&DETAILS



- 1 115L large integral fuel tank provides long time working.
- 2 New designed streamlined hood with three demensional net provides better heat transfer and dust-proof.
- 3 Ground clearance 460mm allows machine easily to pass water and muddy field.
- 4 Operating levers side placed and adopting ergonomics to achieve easy operation and high efficiency

## SPECIFICATIONS

	Modle	WD604F	WD704F
	Structure	4*4	
Engine	Engine Power@speed(HP)	60@2300	70@2300
	Engine Type	4 Cylinders Inline, Vertical, Water-cooled, diesel engine	
	Fuel Tank Capacity(L)	115	
	Battery	12V	
	Air Cleaner	Dry	
	Gears	Shuttle 12F+12R	
Transmission	Clutch	Dual Clutch	
	Brake	Mechanical disc	
	Differential Lock	Pin Type, Mechanical	
	Direction of turning	Clockwise, viewed from tractor rear	
PTO System	Diameter of PTO Sharft(mm)	35	
	PTO Speeds(rpm)	540/760	
	Type	Category II & 3 point hitch	
Hydraulic System	Control System	Position, draft	
	Lifting Capacity(Kg)	≥1588	≥1853
	Dimension(mm) Canopy	3780*1850*2720	3820*1850*2720
Other Parameters	Ground Clearance(mm)	460	
	Tires(F/R)	9.5R24/14.9R30 R-1W, other size optional1992	
	Wheel Base(mm)	180/90	
	Ballast Weight Front/Rear(Kg)	2500(canopy)	
	Min Operation Weight(Kg)		



# B SERIES TRACTOR

## FEATURES

- 1 Bosch TDCI technology adopted high quality engine brings strong power but low fuel consuption
- 2 Transmission 16F+8R shuttle shift with creeper gear of minimum speed around 6m/min allows machine perform well in low-speed working condition.
- 3 Adopt italy Fiat chassis techonlogy for better performance.
- 4 High quality bearings are used for long prolonging working life.
- 5 ROPS&Canopy are equipped as standard, while cabin and air brake are optional for comfrot and road transport.

## IMAGES&DETAILS



- 1 Imported LUK clutch from Germany with high quality and stability.
- 2 Suspending clutch and brake pedal with hydraulic power assisted, easily pedaling.
- 3 Reinforced three point hitch with higher stability. Swing bar can be used with PTO simultaneously.
- 4 Adopt original dry air filter with good filtering result, effectively preventing the dust entering engine.

## SPECIFICATIONS

Modle		WD1004B	WD1104B
Structure		4*4	
Engine	Engine Power@speed(HP)	100@2300	110@2300
	Engine Type	4 Cylinders Inline, Vertical, Water-cooled, diesel engine	
	Fuel Tank Capacity(L)	180	
	Battery	12V	
	Air Cleaner	Dry	
Transmission	Gears	Shuttle 16F+8R with creeper	
	Clutch	Dual Clutch, Independent	
	Brake	Mechanical disc	
	Differential Lock	Pin Type, Mechanical	
PTO System	Direction of turning	Clockwise, viewed from tractor rear	
	Diameter of PTO Sharft(mm)	35	
	PTO Speeds(rpm)	540/760	
Hydraulic System	Type	Category II & 3 point hitch	
	Control System	Position, draft	
	Lifting Capacity(Kg)	≥2647	≥2912
Other Parameters	Dimension(mm) Canopy	4300*2080*2870	
	Ground Clearance(mm)	379	
	Tires(F/R)	13.6-24/16.9-34 R1, other size optional	
	Wheel Base(mm)	2207	
	Ballast Weight Front/Rear(Kg)	320/180	
	Min Operation Weight(Kg)	4060(canopy)/4380(canopy)	



# M SERIES TRACTOR



## IMAGES&DETAILS



- 1 Powerful and large radiator provides great cooling performance .
- 2 Soft and shock-absorption air suspension seat can effectively relive driver of long-term driving fatigue
- 3 Optional cabin with air-condition provides excellent cooling effect through encircled vents around roof.

### FEATURES

- 1 Bosch TDCI technology high quality engine provides strong power but low fuel consumption.
- 2 Transmission 24F+24R shuttle shift with creeper gear of minimum speed around 6m/min allows machine perform well in low-speed working condition
- 3 Domestic initiative PTO adjustable in three stages (540/850/1000rpm) allows tractors match various implements and working condition
- 4 High quality bearings are used for long prolonging working life.
- 5 ROPS&Canopy are equipped as standard, while cabin and air brake are optional for comfrot and road transport.

### SPECIFICATIONS

	Modle	WD1104M	WD1304M
	Structure	4*4	
Engine	Engine Power@speed(HP)	110@2300	130@2300
	Engine Type	4 Cylinders Inline, Vertical, Water-cooled, diesel engine	
	Fuel Tank Capacity(L)	180	
	Battery	12V	
	Air Cleaner	Dry	
Transmission	Gears	Shuttle 24F+24R with Creeper	
	Clutch	Dual Clutch, Independent	
	Brake	Mechanical disc	
	Differential Lock	Pin Type, Mechanical	
PTO System	Direction of turning	Clockwise, viewed from tractor rear	
	Diameter of PTO Sharft(mm)	35	
	PTO Speeds(rpm)	540/850/1000	
Hydraulic System	Type	Category III & 3 point hitch	
	Control System	Position, draft	
	Lifting Capacity(Kg)	≥2912	≥3441
Other Parameters	Steering	Hydraulic Power Steering	
	Dimension(mm) Canopy	4780*2130*2760(Canopy)	
	Ground Clearance(mm)	400	
	Tires(F/R)	13.6-24/16.9-34 R1, other size optional	
	Wheel Base(mm)	2400	
	Ballast Weight Front/Rear(Kg)	320/180	
	Min Operation Weight(Kg)	4150(canopy) / 4450(canopy)	



# E SERIES TRACTOR

## FEATURES

- 1 Bosch TDCI technology high quality 6 cylinders engine provides strong power but low fuel consumption.
- 2 Transmission 24F+8R shuttle shift with creeper of minimum speed around 6m/min allows machine perform well in low-speed working condition.
- 3 Use double steering cylinders on front axle for reducing turning radius.
- 4 High quality bearings are used for long prolonging working life.
- 5 Equipped cabin as standard, air brake optional for road transport.



## IMAGES&DETAILS



- 1 PTO shaft reinforced by thickening to 48mm.
- 2 Powerful hydraulic system with two thick strong oil cylinders and 3 pairs of valves.
- 3 Cabin with great dust&water-proof and noise reduction performance, luxurious trims optional with cup seat, USB interface and cigar lighter etc available.

## SPECIFICATIONS

	Modle	WD1404E	WD1604E
	Structure	4*4	
Engine	Engine Power@speed(HP)	140@2300	160@2300
	Engine Type	6 Cylinders Inline, Vertical, Water-cooled, diesel engine	
	Fuel Tank Capacity(L)	300	
	Battery	12V	
	Air Cleaner	Dry	
Transmission	Gears	Shuttle 24F+8R with Creeper	
	Clutch	Dual Clutch, Independent	
	Brake	Mechanical disc	
	Differential Lock	Pin Type, Mechanical	
PTO System	Direction of turning	Clockwise, viewed from tractor rear	
	Diameter of PTO Sharft(mm)	48	
	PTO Speeds(rpm)	760/850	
Hydraulic System	Type	Category III & 3 point hitch	
	Control System	Position, draft	
	Lifting Capacity(Kg)	≥3706	≥4235
Other Parameters	Steering	hydraulic Power Steering	
	Dimension(mm) Canopy	5220*2300*2940	
	Ground Clearance(mm)	470	
	Tires(F/R)	14.9-26/18.4-38 R1, other size optional	
	Wheel Base(mm)	2720	
	Ballast Weight Front/Rear(Kg)	600/540	
	Min Operation Weight(Kg)	5660(Cabin)	



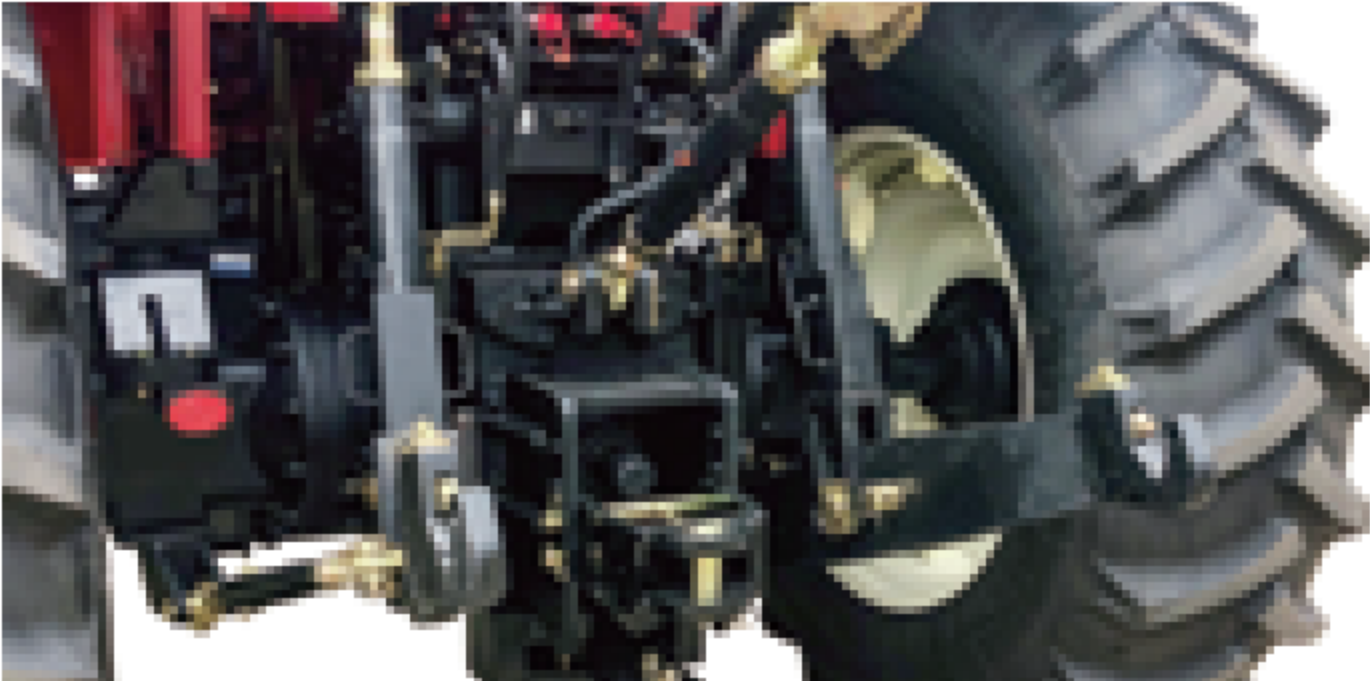
# G SERIES TRACTOR



## IMAGES&DETAILS



1/ Imported LUK 14 inches clutch from Germany with high quality and stablity



2/ Powerful hydraulic system with two strong high pressure oil cylinders to provide better performance at ploughing. Swing bar as standard.



3/ Cabin with great dust&water-proof and noise reduction performance, luxurious trims optional with cup seat, USB interface and cigar lighter etc available.

## FEATURES

- 1 Bosch TDCI technology high quality 6 cylinders engine provides strong power and great performance at working.
- 2 Transmission 32F+32R shuttle shift with creeper of minimum speed around 6m/min allows machine perform well in low-speed working condition.
- 3 Enhanced transmission, using helical gear and gear grinding process to achieve high transmission torque and strong bearing capacity.
- 4 High quality bearing are used for long work prolonging work life.
- 5 Equipped cabin as standard, air brake optional for road transport.

## SPECIFICATIONS

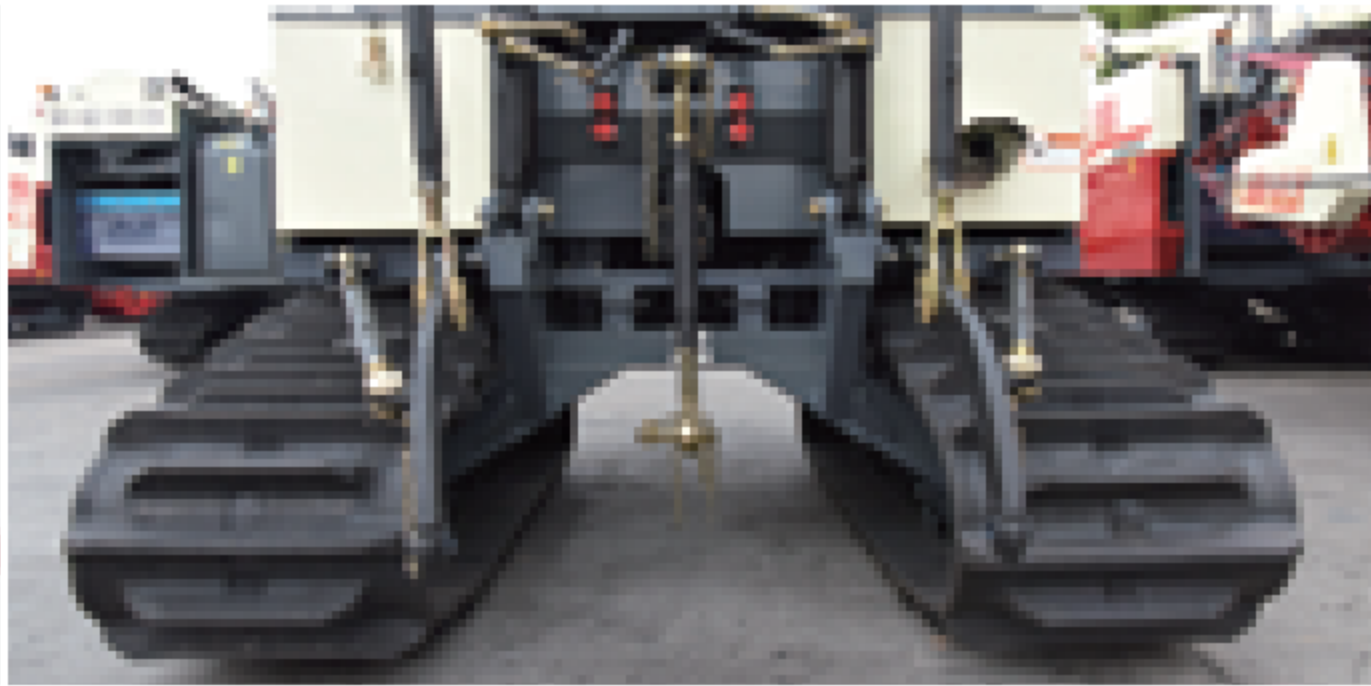
	Modle	WD1804G	WD2004G
	Structure	4*4	
Engine	Engine Power@speed(HP)	180@2300	200@2300
	Engine Type	6 Cylinder, Inline, Vertical, Water-cooled, diesel engine	
	Fuel Tank Capacity(L)	410	
	Battery	12V	
	Air Cleaner	Dry	
Transmission	Gears	Shuttle 32F + 32R with Creeper	
	Clutch	Dual Clutch, Independent	
	Brake	Mechanical disc	
	Differential Lock	Pin Type, Mechanical	
PTO System	Direction of turning	Clockwise, viewed from tractor rear	
	Diameter of PTO Sharft(mm)	48	
	PTO Speeds(rpm)	760/850	
Hydraulic System	Type	Category II & 3 point hitch	
	Control System	Position, draft	
	Lifting Capacity(Kg)	≥4565	≥5294
Other Parameters	Steering	Hydraulic Power Steering	
	Dimension(mm)@Cabin	5510*2665*3140	
	Ground Clearance(mm)	470	
	Tires(F/R)	16.9-28/20.8-38 R-1, other size optional	
	Wheel Base(mm)	2860	
	Ballast Weight Front/Rear(Kg)	720/540	
	Min Operation Weight(Kg)	7250(Cabin)	



# CRAWLER TRACTOR



## IMAGES&DETAILS



- 1

Ground clearance 420mm, 500mm\*90mm\*56 rubber track and small ground pressure lead to wonderful working ability in paddy field.
- 2

Paddy rotavator as standard, great performance on burying stubble and beating mud.
- 3

Three-points suspension can match other various implements.

## FEATURES

- 1 Compact structure allows machine to work neatly in small paddy field.
- 2 One controlling lever of steering achieves easy operation.
- 3 Adopt hydraulic lifting with two oil cylinders to provide strong lifting force.
- 4 Widened rubber track with less pressure on ground allows machine to easily pass deep muddy field.

## SPECIFICATIONS

Modle		MENGLONG 1GZL-220B
Canopy/Cabin		Rops&Canopy
Overall Size (mm)		4100*2450*2740
Ground Clearance (mm)		420
Guage (mm)		1200
Weight(Kg)		2750
Working Efficiency(hm²/h)		≥0.38
Track		550mm*90mm*56 High Teeth
Engine	Type	Inline, Vertical, Water-cooled, 4 Strokes, diesel engine
	Rated Power(HP)	102
	Rotating Speed(rpm)	2600
Hydraulics	3 Point Hitch	CategoryII
	Behind Valves	Two Pairs of Valves
Front Ballast Weight(Kg)		5*40Kg=200
PTO System	Spline	6
	Direction of turning	Clockwise, viewed from tractor rear
	PTO Speeds(rpm)	760
Paddy Rotavator	Width(mm)	2200
	Numbers of Rotary Blade	106
	Type of Rotary Blade	III T195